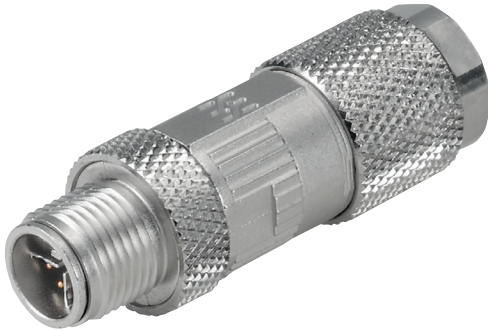


## M12-X plug connector Cat.6A

shielded, IDC



### Description

The M12-X plug connector fulfils the product requirements of IEC 61076-2-109 and also the requirements of ISO/IEC 11801 for category 6A up to 500 MHz.

In conjunction with category 6A, 7 and 7A data cables, it enables acceptance measurements for class EA permanent links.

This makes it suitable for the transmission of 10 Gigabit Ethernet in accordance with IEEE 802.3an.

Suitable for PoE applications in accordance with IEEE 802.3at.

Sturdy die-cast zinc housing with M12 thread, X-coded, for industrial applications

Gold-plated contact surface.

Cable connection using IDC contacts and tool-free wire contacting.

A flat side cutter is only required to cut the wires to length.

Cable entry with 360° braided shield contact. Strain relief via cable gland.

The plug connector can be reconnected

### General properties

Operating temperature	-40 °C - +85 °C
-----------------------	-----------------

### Mechanical properties

Connection type	IDC
Solid copper wire	0.41 mm (AWG 26) - 0.64 mm (AWG 22)
Stranded copper wire	0.14 mm <sup>2</sup> (AWG 26/7) - 0.35 mm <sup>2</sup> (AWG 22/7)
Protection class	IP67, in plugged condition
Contact surface	Gold-plated
Housing main material	Zinc diecast
Plugging cycles	≥ 100
Type of connector	M12

**Standards**

PoE	IEEE 802.3at
UL certification	E316369

**Versions**

Material number	Product	Weight [kg]	Packing unit	GTIN / EAN
65546000ZY	M12-X plug connector Cat.6A shielded, IDC	0.03 kg	1 pc.	40393910233124

Subject to technical modification

As of 2024-06-12 13:38:31