

# IMU Intelligent Management Unit

24-port control switching unit for Intelligent Patch Panels

E-cabling Solution - Control Switching Unit



## Description

Management interface for electronic patch panels.

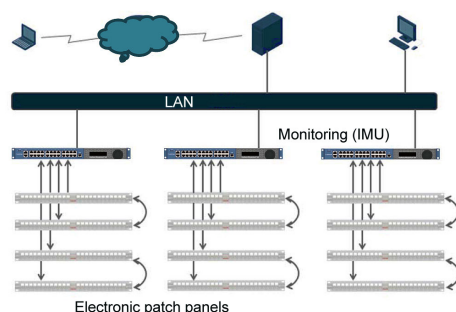
Live data collection and upload.

100-Mbps Ethernet interface provides high-speed data upload.

Front panel equipped with LED power indicator and LED status.

Port provides short circuit protection.

Supports web-server for IP, building information, wiring cabinets information, wiring patch information.



## Application

Patch cords location.

View patch panel port connection status.

Patch cords disconnect operation guide.

Alarms messages and alarm status handling.

IMU's IP address.

Setting IMU's ID.

Rear port connection status and patch cord connection status.

## Remarque

This unit is part of Datwyler's E-cabling Solution.

## Versions

Numéro de matériau	Produit	Poids [kg]	Unité d'emballage
4110887	24-port Intelligent Management Unit, IMU	0 kg	1 pc.