

CASE STUDY

TBS STROM AG:

PROVEN SOLUTION FOR FTTH DEVELOPMENT

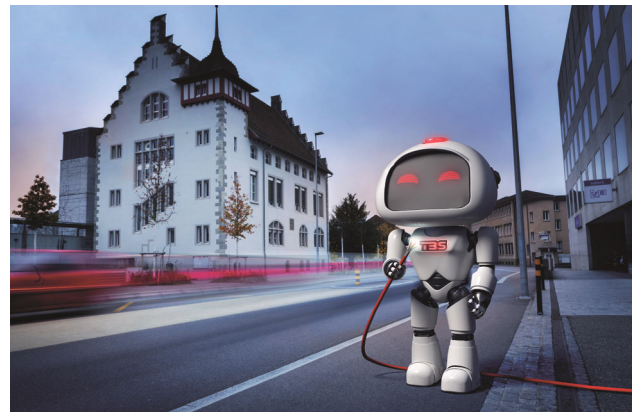
The Swiss municipality Suhr now has a wide-area, fast fibre optic network. The cabling solution for the outdoor area came entirely from Datwyler IT Infra in Altdorf.

TBS Strom AG is a regional utility company in the Swiss canton of Aargau. It provides the public and businesses in Suhr with a reliable supply of electricity, water and district heating and is actively involved in the development of sustainable energy solutions. It also operates a high-performance fibre optic network and supports the digital infrastructure in the region. With its customer- and future-oriented outlook, TBS is making an important contribution to regional development.

In spring 2021 TBS began developing a wide-area fibre optic network for the municipality, in the form of a Fibre-to-the-Home network. The aim of this project was to be able to offer Internet connections of at least one gigabit per second to all users, replacing the old TV cable network, enabling smart metering applications and creating a future-proof digital infrastructure.

High quality solution

The cabling solution for the network's outdoor area came entirely from Dätwyler IT Infra AG. The most important part are the FO Outdoor micro cables from the Altdorf-

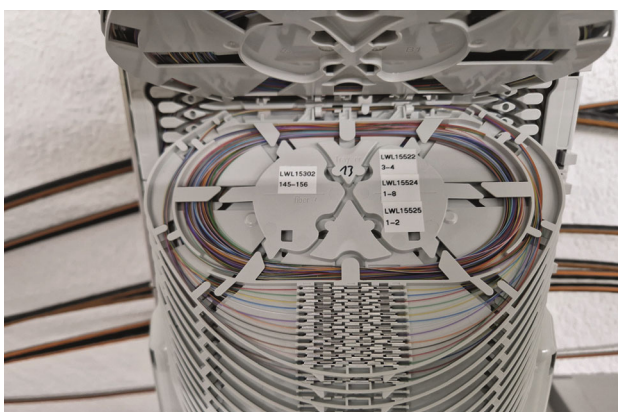


based IT infrastructure provider. These exactly complied with the company's requirements for a wide-area FTTH development, for instance with regard to structure, fibre type, diameter and tensile strength. Plus the appropriate micro tubes which enabled a rapid, reliable injection of the fibre optic cable.

And so Datwyler IT Infra was a key contributor to the reliable and future-proof network infrastructure in the Suhr municipality.

The fibre optic cables produced in Altdorf, in the canton of Uri, represent the highest level of reliability and quality. The range also includes mini and micro cables that have been developed specifically for the Swiss network infrastructure.

These products have been tried and tested over the years and have proven themselves in many projects. Network providers who choose Datwyler therefore have the benefit of technical know-how, tailor-made products, short delivery paths and long-lasting, robust solutions.





Reliable implementation

Throughout the project, Datwyler IT Infra worked closely with the client and all involved companies to ensure reliable implementation and enable the first 200 households to be connected to the Fibre-to-the-Home network within the same year.

The entire development – including individual new constructions – was completed by the end of 2024. Today it includes around 2000 properties with 5800 utilisation units.

(March 2026)